



>>> Developing



KEY FEATURES

- Complies with IEC/EN/UL 62368-1 standard
- Digital power management (PMbus / PSMI)
- High efficiency (more than 94%)
- N+1 redundancy design with current sharing
- Cold redundancy support
- Intelligent-thermal fan control
- Japanese capacitors improve PSU reliability



SPECIFICATION

Model Name		TG23-0760-02	
Output	Rated Power	760 W	
	Output Voltage	3.3 Vsb	12 Vdc
	Maximum Output Current	3.6 A	62.3 A
	Over Current Limit	120~200 %	110~130 %
	Minimum Output Current	0.1 A	1.0 A
	Ripple & Noise	≤ 100 mV	≤ 240 mV
	Hold Up Time	≥ 500 us @40% Load, 50~5KHz	
Input	Input Voltage	100~240 Vac	
	Input Frequency	47~63 Hz	
	Power Factor	≥ 0.99 @100% Load	
	Efficiency	≥ 94 % @50% Load	
	Inrush Current	≤ 55 A @264Vac, 25°C	
EMC	Surge	2KV (L/N-G), 1KV (L-N)	
	EMI	EN55032, FCC Part 15	
	ESD	IEC61000-4-2	
Environmental	Operating Temperature	-20~+60 °C	
	Storage Temperature	-40~+85 °C	
	Operating Humidity	5~95 %RH	
	Storage Humidity	5~95 %RH	
	Operating Altitude	5,000 m	
Others	Dimension (W x L x H)	54.5 x 322 x 40 mm (2.15 x 16.68 x 1.57 inch) ; 1U	
	Mean Time Between Failures	≥ 300,000 hours @100% Load, 230Vac/50Hz, 25°C	
	Certifications	CB, UL/cUL	

*Specifications are subject to change without notice

DK20240530

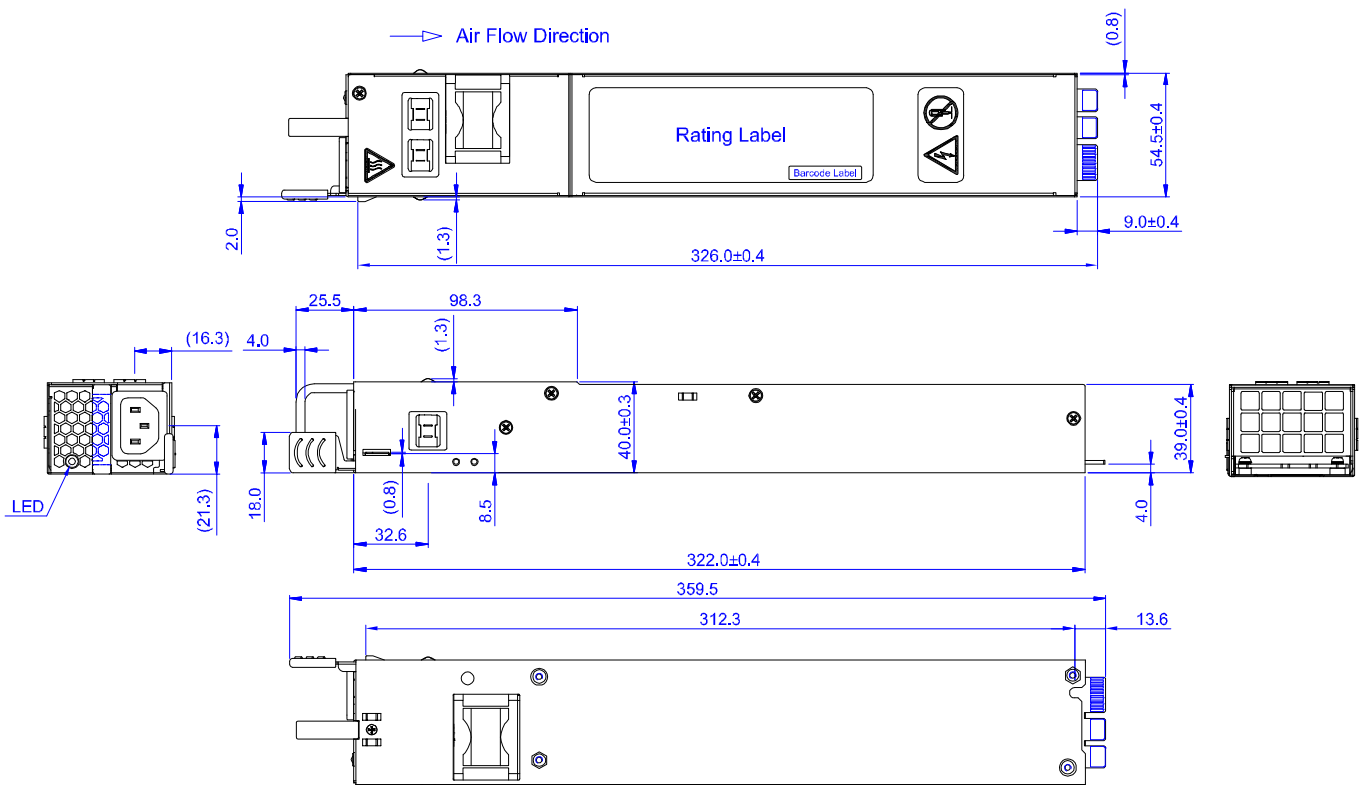


APPLICATION

- Server
- Storage
- 100 GbE Switch



MECHANICAL SPECIFICATION



Unit: mm

LEAD YEAR ENTERPRISE CO., LTD.

2F No.618 RuiGuang Road, NeiHu District, Taipei, Taiwan 11492

Tel: +886-2-2657-2191

Fax: +886-2-2657-8798

Email: sales@tigerpower.com

DK20240530



www.tigerpower.com

Copyright © 2024 Lead Year Enterprise Co., Ltd. All rights reserved.