

## KEY FEATURES

- Complies with IEC/EN/UL 62368-1 standard
- Meets IEEE 802.3af/at/bt PSE requirements
- Dual output design meets PoE insulation regulation
- Dual outputs with different ground wires
- RPS redundancy design (current sharing option)
- Low EMI design enhance system stability
- Exclusive design prolongs capacitor lifetime ( $\geq 5$  yrs.)



## SPECIFICATION

Model Name		TN15-0950-03	
Output	Rated Power	950 W (with 45 CFM)	
	Derating Power	475W@70°C (Derate linearly from 100% load at +50°C to 50% load at +70°C)	
	Output Voltage	12 Vdc	54 Vdc
	Maximum Output Current	16.7 A	13.7 A
	Over Current Limit	22.5 A	17.8 A
	Minimum Output Current	0.1 A	0 A
	Ripple & Noise	$\leq 1\%$	$\leq 1\%$
	Hold Up Time	$\geq 16$ ms @100% Load	
Input	Input Voltage	90~264 Vac	
	Input Frequency	47~63 Hz	
	Power Factor	$\geq 0.9$ @100% Load, 115Vac	
	Efficiency	$\geq 87\%$	
	Inrush Current	$\leq 30A$ @115Vac, 25°C ; $\leq 60A$ @230Vac, 25°C	
EMC	Surge	2KV (L/N-G), 1KV (L-N)	
	EMI	EN55032, FCC Part 15	
	ESD	IEC61000-4-2	
Environmental	Operating Temperature	-20~+70 °C	
	Storage Temperature	-40~+85 °C	
	Operating Humidity	5~95 %RH	
	Storage Humidity	5~95 %RH	
	Operating Altitude	5,000 m	
Others	Dimension (W x L x H)	127 x 254 x 41.5 mm (5 x 10 x 1.63 inch)	
	Mean Time Between Failures	$\geq 100,000$ hours @230Vac/50Hz, 25°C	
	Certifications	CB, TÜV, UL/cUL, UKCA	

\*Specifications are subject to change without notice

DK20220825



## APPLICATION

- PoE Switch



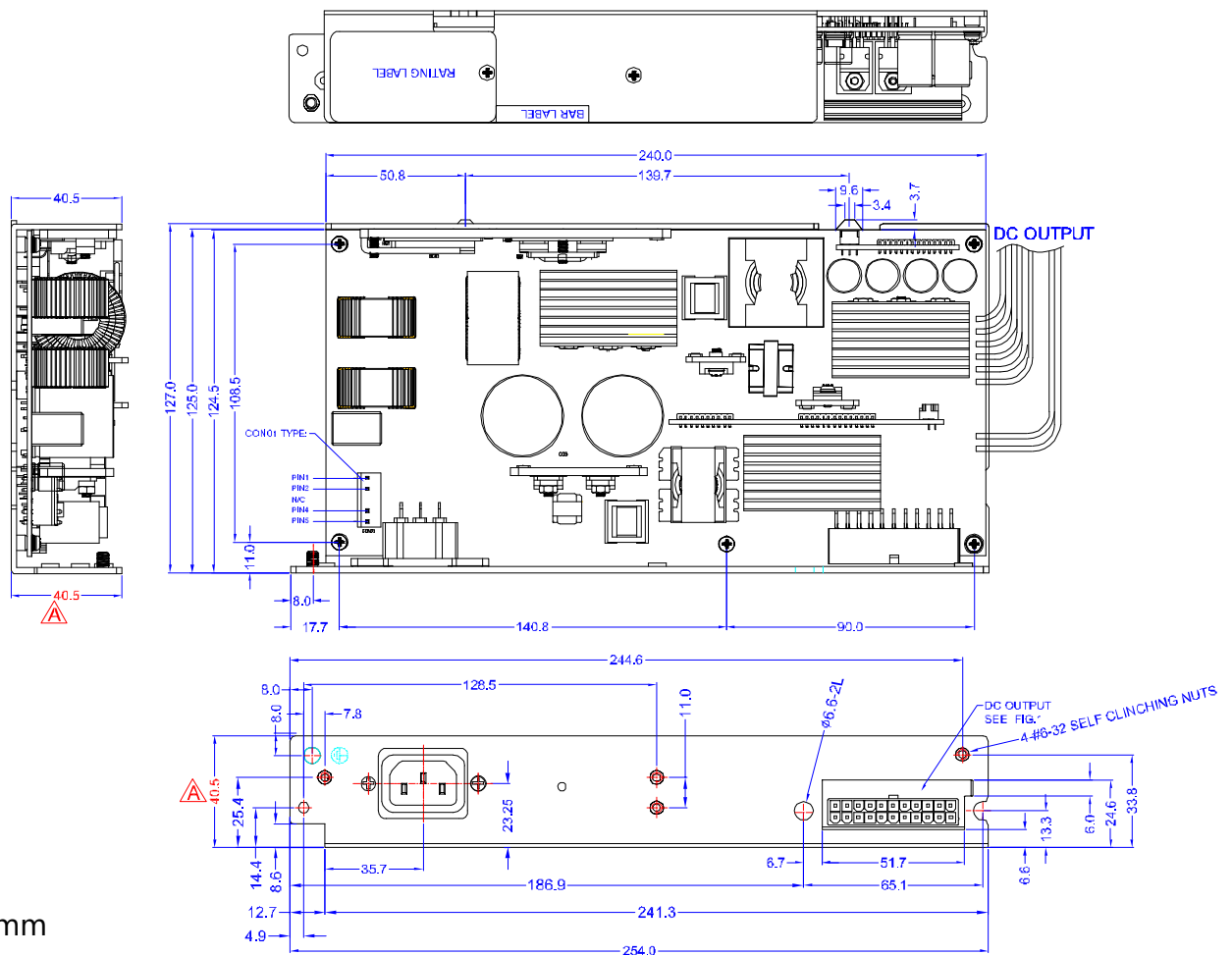
- IP-PBX



- Industrial



## MECHANICAL SPECIFICATION



**LEAD YEAR ENTERPRISE CO., LTD.**

2F No.618 RuiGuang Road, NeiHu District, Taipei, Taiwan 11492

Tel: +886-2-2657-2191

Fax: +886-2-2657-8798

Email: sales@tigerpower.com

DK20220825



www.tigerpower.com

Copyright © 2022 Lead Year Enterprise Co., Ltd. All rights reserved.