

## KEY FEATURES

- Meets UL 62368-1 standard
- Meets IEEE 802.3af/at/bt PSE requirements
- High efficiency up to 94%
- Two power supplies in parallel provide up to 2,000W
- 1+1 redundancy design with current sharing
- High power density up to 21.48W/in<sup>3</sup>
- Japanese capacitors improve PSU reliability



## SPECIFICATION

Model Name		TN19-1000-01
Output	Rated Power	1,000 W (with 18.7 CFM fan x2)
	Output Voltage	56 Vdc
	Maximum Output Current	17.8 A
	Over Current Limit	25 A
	Minimum Output Current	0 A
	Ripple & Noise	≤ 500 mVp-p
	Hold Up Time	≥ 10 ms @100% Load, 100Vac
Input	Input Voltage	90~264 Vac
	Input Frequency	47~63 Hz
	Power Factor	≥ 0.95 @100% Load, 100Vac/60Hz
	Efficiency	≥ 94% @100% Load, 230Vac/50Hz
	Inrush Current	≤ 20 A @100Vac, 25°C
EMC	Surge	4KV (L/N-G), 2KV (L-N)
	EMI	EN55032
	ESD	IEC61000-4-2
Environmental	Operating Temperature	0 ~+50 °C
	Storage Temperature	-40~+80 °C
	Operating Humidity	10~90 %RH
	Storage Humidity	5~95 %RH
	Operating Altitude	5,000 m
Others	Dimension (W x L x H)	100 x 210 x 33.5 mm (3.94 x 8.27 x 1.32 inch) *The height excludes PCB thickness
	Mean Time Between Failures	≥ 1,000,000 hours @100Vac/60Hz, 25°C
	Certifications	CB, UL/cUL

\*Specifications are subject to change without notice

PR20211007



## APPLICATION

- PoE Switch



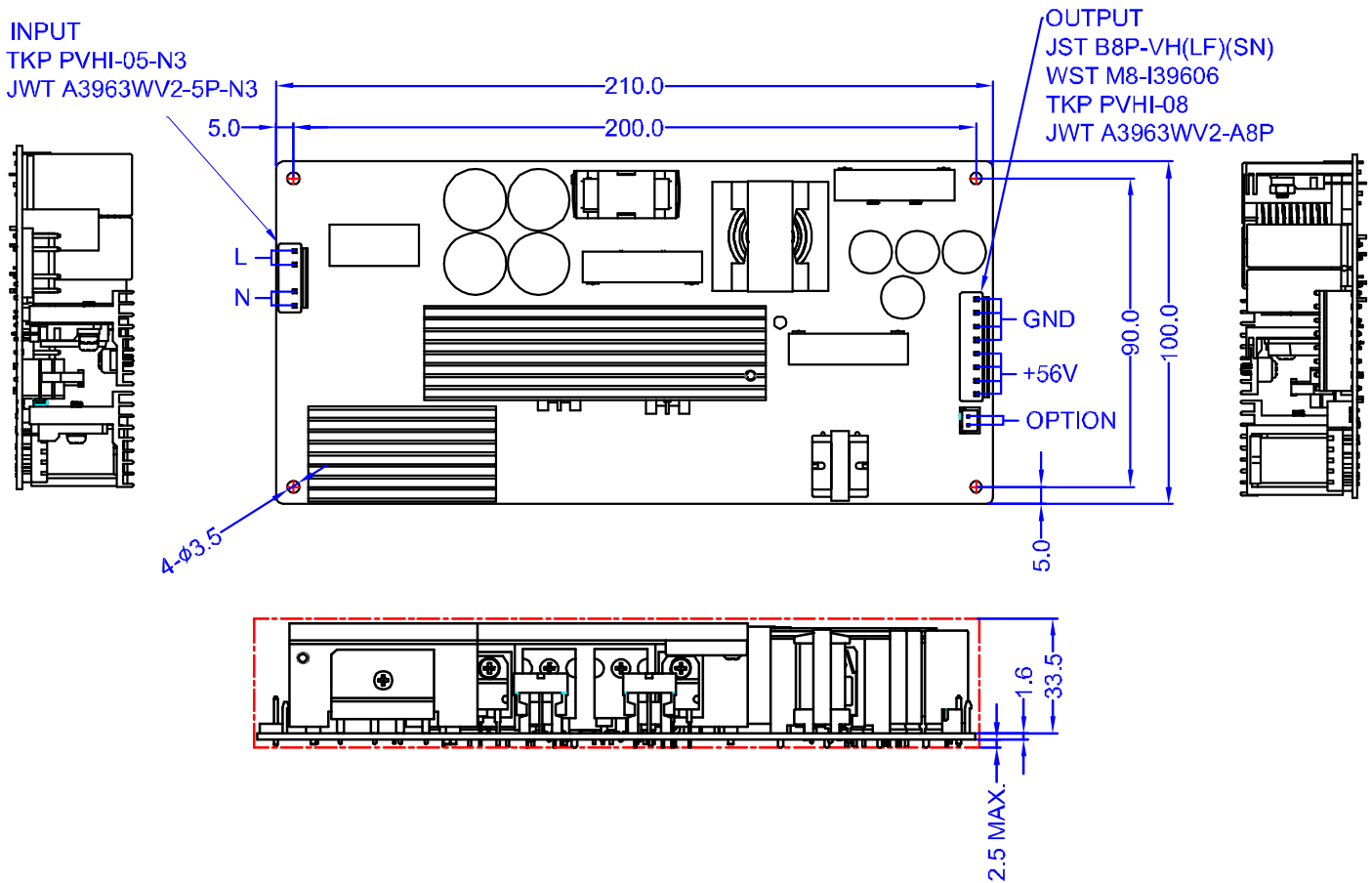
- IP-PBX



- Industrial



## MECHANICAL SPECIFICATION



Unit: mm

**LEAD YEAR ENTERPRISE CO., LTD.**

2F No.618 RuiGuang Road, NeiHu District, Taipei, Taiwan 11492

Tel: +886-2-2657-2191

Fax: +886-2-2657-8798

Email: sales@tigerpower.com

PR20211007

