

>>> Developing



## KEY FEATURES

- Complies with IEC/EN/UL 62368-1 standard
- Meets IEEE 802.3af/at/bt PSE requirements
- Dual outputs with different ground wires
- Wide operation temperature from -40°C to +75°C
- Two power supplies in parallel provide up to 600W
- 1+1 redundancy design with current sharing
- Low EMI design enhance system stability



\* Upgradable UL 62368-1

## SPECIFICATION

Model Name		TN20-0300-01	
Output	Rated Power	300 W (Fanless) ; 500 W (with 25 CFM)	
	Derating Power	60W@50~75°C (Fanless)	240W@50°C~160W@75°C (Fanless)
	Output Voltage	12 Vdc	54 Vdc
	Maximum Output Current	5 A	4.44 A
	Over Current Limit	5.5~8.3 A	4.88~7.38 A
	Minimum Output Current	0 A	0 A
	Ripple & Noise	≤ 120 mVp-p	≤ 200 mVp-p
	Hold Up Time	≥ 25 ms	≥ 16 ms
Input	Input Voltage	88~264 Vac	
	Input Frequency	47~63 Hz	
	Power Factor	≥ 0.95 @100% Load, 240Vac/60Hz	
	Efficiency	≥ 92 % @100% Load, 230Vac/50Hz	
	Inrush Current	≤ 45 A @115Vac, 25°C ; ≤ 90 A @230Vac, 25°C	
EMC	Surge	4KV (L/N-PE), 2KV (L-N)	
	EMI	EN55032, FCC Part 15	
	ESD	IEC61000-4-2	
Environmental	Operating Temperature	-40~+75 °C	
	Storage Temperature	-40~+80 °C	
	Operating Humidity	10~90 %RH	
	Storage Humidity	5~95 %RH	
	Operating Altitude	5,000 m	
Others	Dimension (W x L x H)	93.4 x 220 x 40.5 mm (3.68 x 8.66 x 1.59 inch)	
	Mean Time Between Failures	≥ 300,000 hours @100Vac/60Hz, 25°C	
	Certifications	CB, TÜV, UL/cUL	

\*Specifications are subject to change without notice

CS20220826



## APPLICATION

- PoE Switch



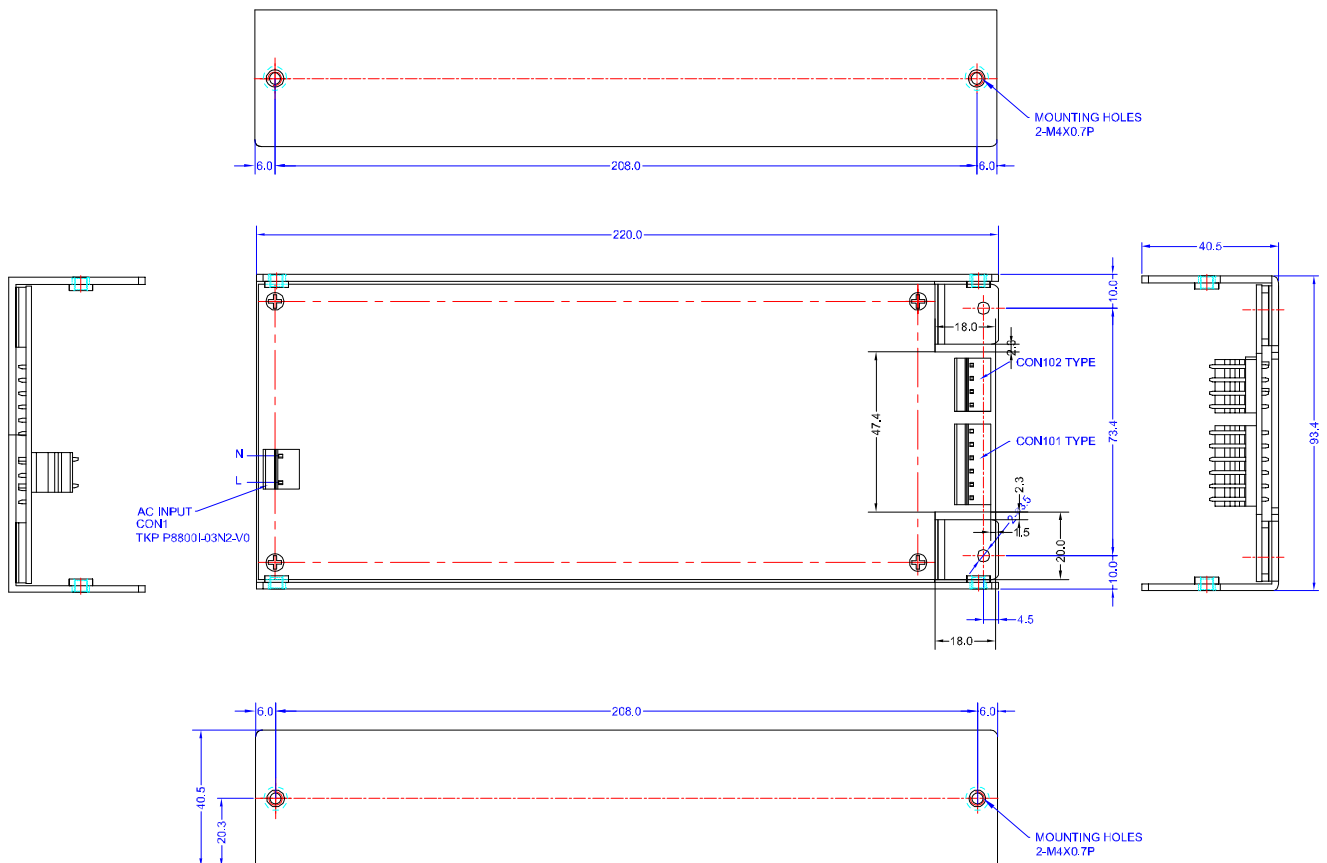
- IP-PBX



- Industrial



## MECHANICAL SPECIFICATION



Unit: mm

**LEAD YEAR ENTERPRISE CO., LTD.**

2F No.618 RuiGuang Road, NeiHu District, Taipei, Taiwan 11492

Tel: +886-2-2657-2191

Fax: +886-2-2657-8798

Email: sales@tigerpower.com

CS20220826



[www.tigerpower.com](http://www.tigerpower.com)

Copyright © 2022 Lead Year Enterprise Co., Ltd. All rights reserved.